

PRINT TO ESIGN GENIE INSTALLATION HELP AND USER GUIDE:

THIS GUIDE WILL HELP YOU IN INSTALLING THE PRINT TO ESIGN GENIE PRINTER DRIVER IN YOUR SYSTEM.

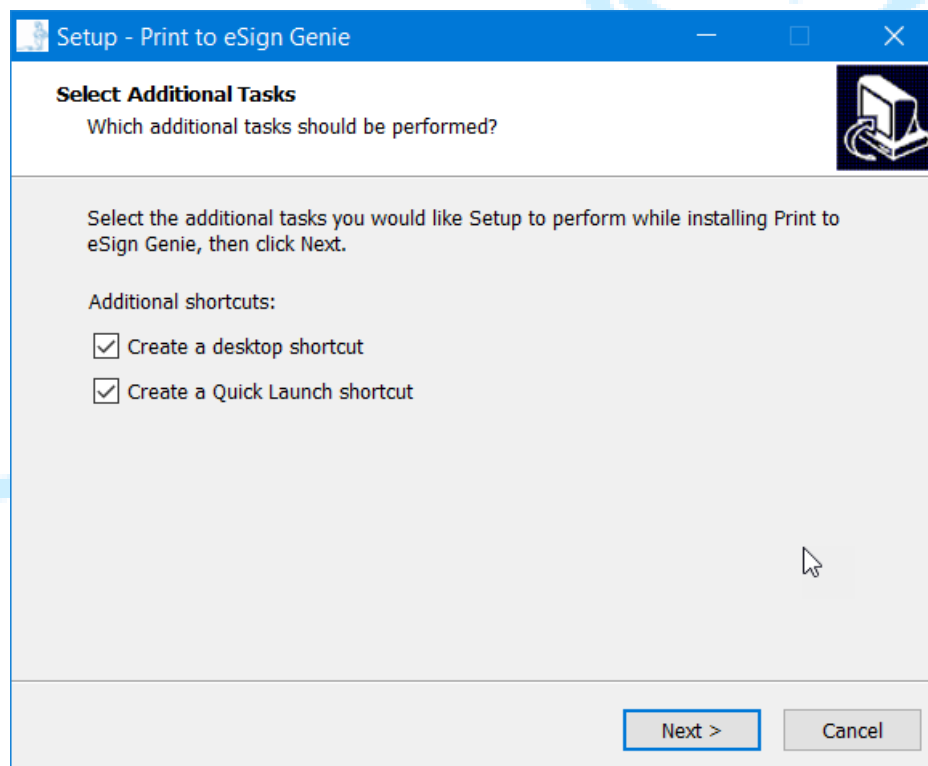
INSTALLATION GUIDE:

1. Kindly open the Print to eSign Genie Driver installation file,



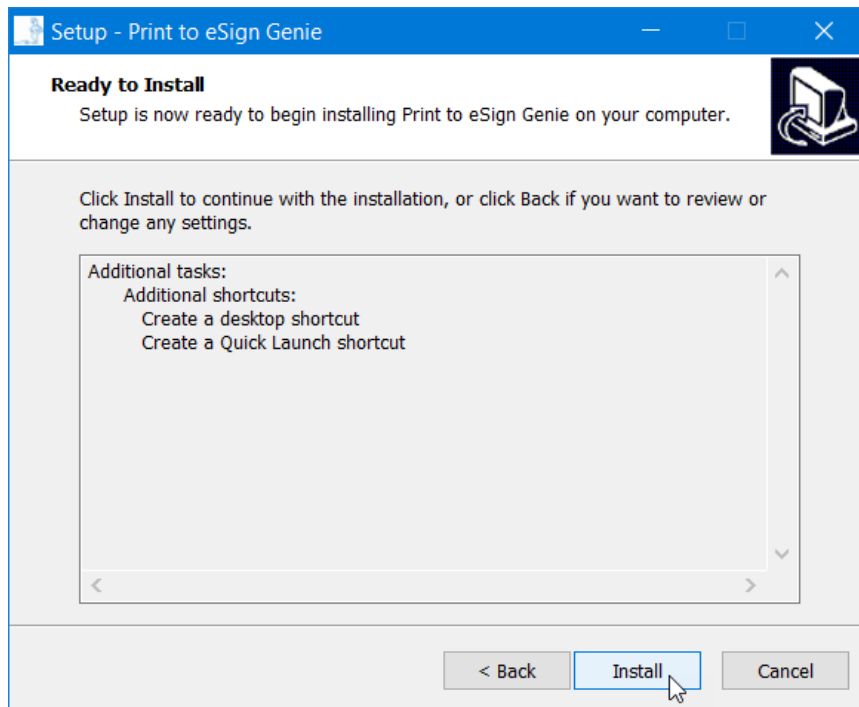
Double click it or right click and select Install from the menu to start the installation process.

2. Once you double click the Installer, you will be redirected to the following window,

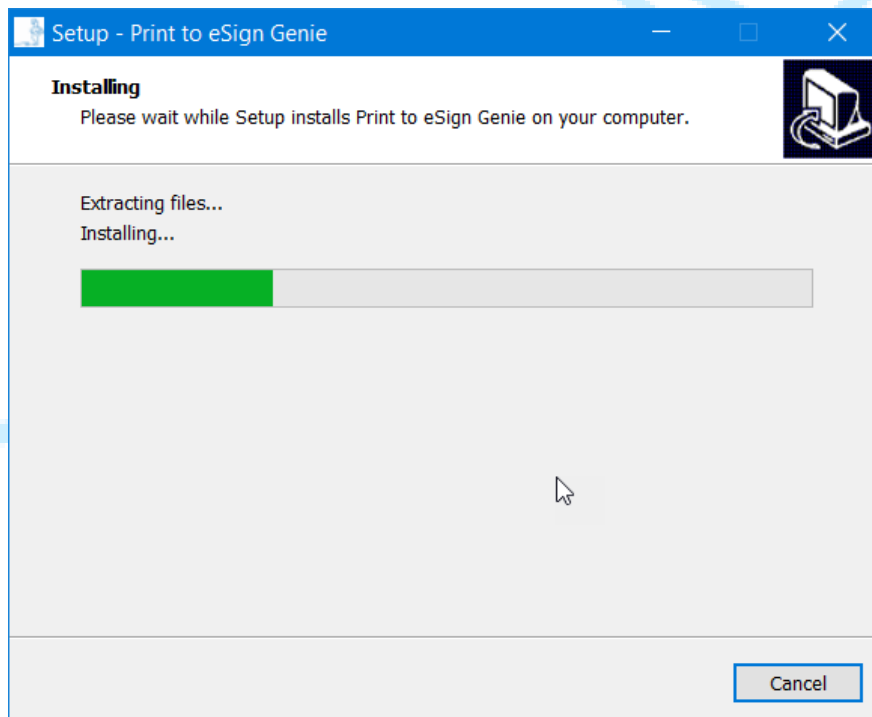


In the above window, by default the Create a desktop shortcut and Create a Quick Launch shortcut options will be enabled. If you want you can untick them. Click Next to proceed to next window.

3. After clicking next you will be redirected to the next window as follows,

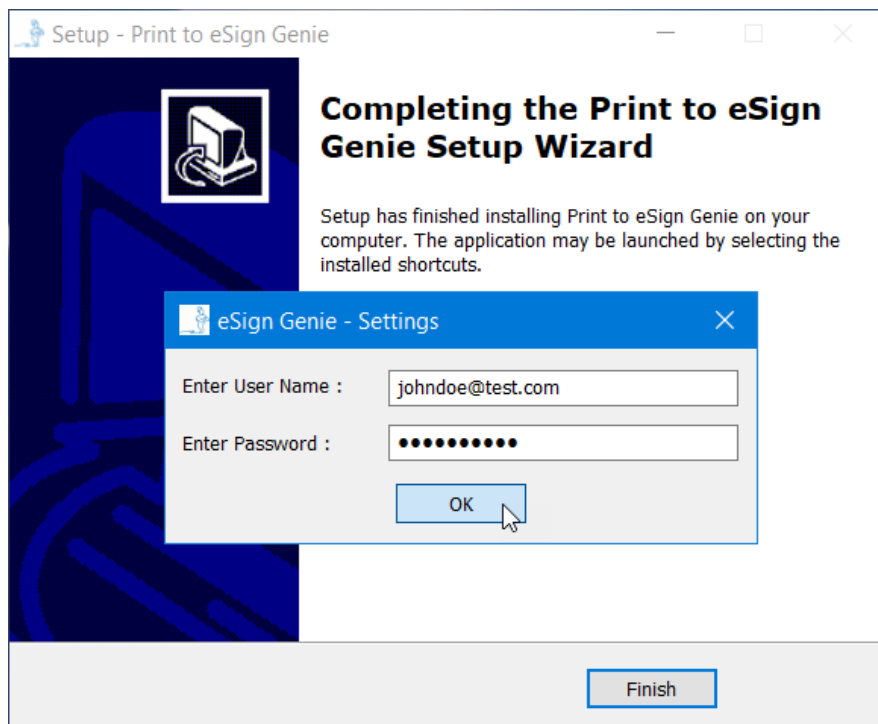


4. In the above window, if you want to make any changes to the installation options click Back and go to the previous window and make the changes, if not click Install button to proceed with the printer driver installation.



Now the installation started and the progress is shown above.

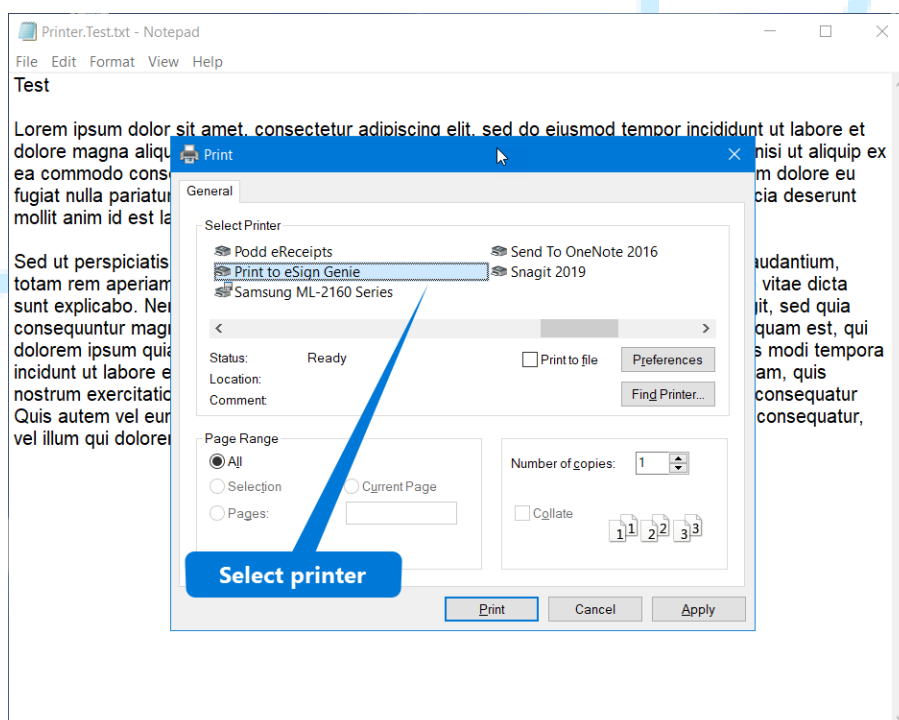
- At the end of the installation process you will be asked to enter the username and password to complete the installation,



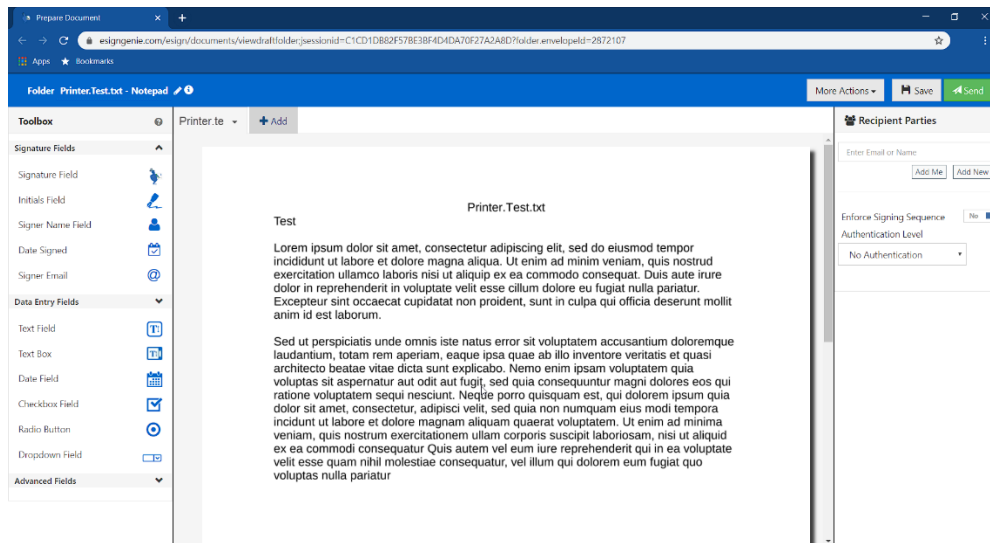
After entering the user name and password, click OK to save the settings and then click Finish to complete the installation.

PRINTING AND VIEWING

- Open the desired document, which needs to be sent, and proceed with print option.



Click Print to proceed with the printing. Once the printing process complete successful then the sent file will open from the URL in the default browser of your system.

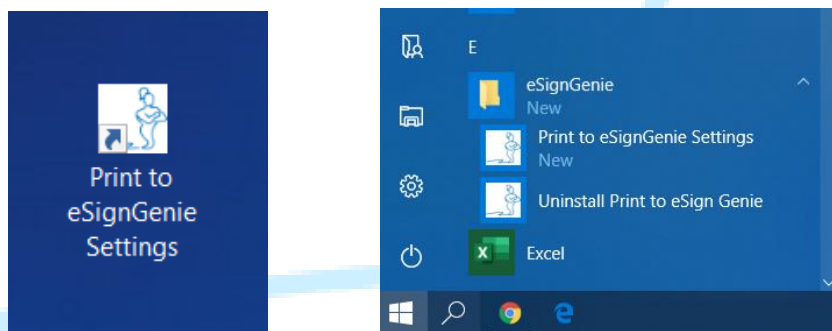


You can also view the file using you login credential at print to eSign Genie website.

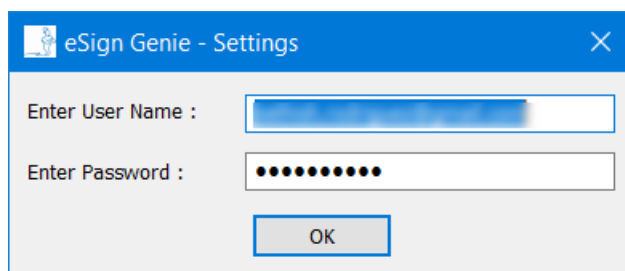
URL: <https://www.esigngenie.com/esign/>

USER CREDENTIALS CHANGING

1. To change the user name and password in case of different user to print and send files, kindly open the Print to eSign Genie settings window from the desktop shortcut created during the installation or from the All program Menu from Start menu.



2. The Print to eSign Genie settings window will be looking as follows,



Kindly enter the new user name and password and click ok to save the settings.

3. Here after the Print to eSign Genie will use the new user credentials to print and send files.